

# SUR-SIZE™ CUT-TO-LENGTH ASSEMBLY

FG-1000



# SUR-SIZE™ CUT-TO-LENGTH ASSEMBLY

## FG-1000

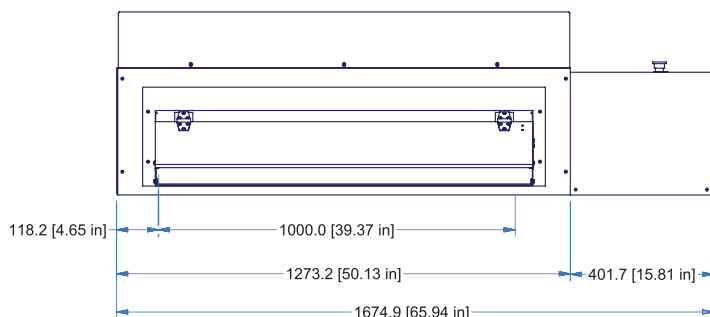
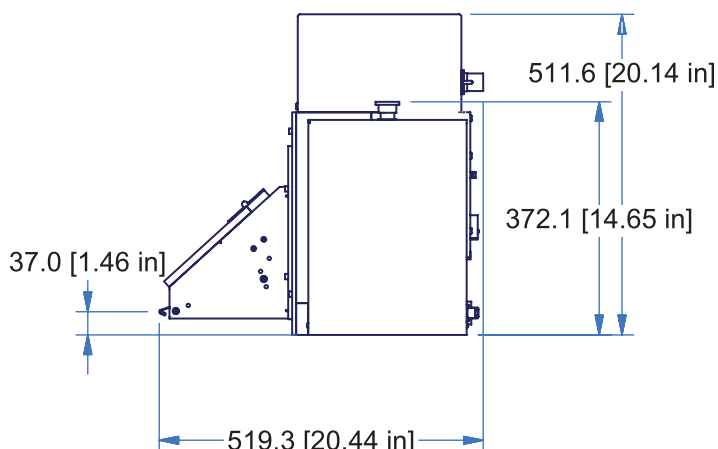
### TECHNICAL SPECIFICATION

Solid Models Available Online

Simple and easy to use, just enter the length and quantity on the color touch screen. The unit automatically feeds, cuts, and counts the pieces to meet your requirements. An end-of-cycle signal is provided once the cuts are completed. For an automated one-shot process, this unit will feed and cut the material on demand. Clean cuts are provided by the guillotine knife assembly.

This integrated unit is a convenient package for many users who just want to plug in a power cord and air line to start cutting their product.

We can support each of these SUR-SIZE™ units around the world with our remote access. Each unit is built with a USB port which is directly connected to the controls. The unit can be connected to an internet interface utilizing a USB cable, allowing tech support from anywhere in the world.



### BENEFITS

- Eliminates the need for a large inventory of cut product
- Simple and reliable
- Easy to use as a stand-alone unit or as an in-line component
- Easy operator interface with color touch screen
- Enter lengths in either inches or metric
- Modular knife cartridge
- On demand one-shot cuts
- Reduced scrap

### MATERIALS

- |                  |                     |
|------------------|---------------------|
| • Absorbent Pads | • Pads              |
| • Fabrics        | • Paper             |
| • Fiber Glass    | • Personal Care Pet |
| • Film           | • Products          |
| • Filter         | • PTFE              |
| • Felt           | • Pvc               |
| • Foam           | • Rubber            |
| • Foil           | • Shrink Tubing     |
| • Gaskets        | • Tape              |
| • Hose           | • Test Strips       |
| • Laminates      | • Test Strips       |
| • Mesh           | • Thin Gauge Metal  |
| • Metalized Film | • Tubing            |
| • Non-wovens     | • Velcro            |

### SPECIFICATIONS

- Minimum length: 0.1 mm/0.005"
- Maximum length: 9999.99 mm/999.999"
- Power requirements: 110 VAC or 220 VAC
- 30 - 90 psi (2 - 6 bar) compressed air
- Accuracy: +/- 0.38 mm/0.015" or 0.1% of cut length (whichever is larger)

### OPTIONS

- Eye registration: a fiber optic sensor locates a registration mark to cycle the unit
- No-product sensor
- Product verification sensor
- High accuracy drive up to +/- 0.05 mm/0.002" or 0.05%
- One-shot input and feedback output
- Infeed roll unwind
- Outfeed conveyor
- Additional I/O
- Slitter attachment
- Various roller options
- Static control
- Specials up to 1676 mm/66" wide
- All electric
- Material clamps



### WARNING:

EQUIPMENT MUST BE GUARDED IN ACCORDANCE WITH ALL FEDERAL, STATE, AND LOCAL REQUIREMENTS



FOR ALL YOUR FEEDING AND CUTTING NEEDS

26 Just Road, Fairfield, NJ, 07004 | 973-439-1428 | [azcocorp.com](http://azcocorp.com)



visit us online!

